



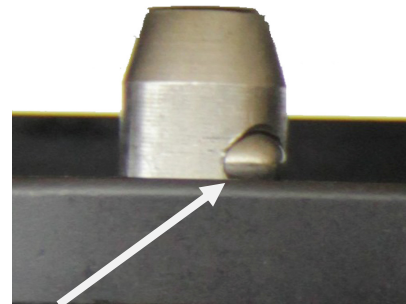
# TerrAdaptor™

## QuickLash



The TerrAdaptor's ability to provide unlimited rigging options with variable head angles and leg positions make it the most versatile portable anchor system on the market. Now we have added even more versatility to the system with the Quicklash, a new auxiliary anchor point that can be added before, during or even after the setup of the TerrAdaptor.

The **QuickLash** simply connects to the Perf Tube (grey tube) with the supplied quick release pin. Insert the pin through both holes of the QuickLash and make sure the ball is visible on the outside, as shown in the picture, to assure proper installation.



Ball should be visible

The QuickLash can be used as a connection point for a single or multi-directional tieback, attached at the foot connection point, attached on the inside of the leg to be used as a tie down support for greater stability of the system, and/or used as an attachment point for hanging pulleys or other gear. The greatest feature of the QuickLash is its ability to be added into the system at anytime without having to disassemble component parts to place it on the tube where you need it and doing so without having to sacrifice strength considerations. When the QuickLash is loaded straight along the major axis the strength is 30kN and 15kN when pulled to the side at 90 degrees (when following all normal guidelines for tripod rigging and use).

### **Best Practice:**

Evaluate the forces in which the QuickLash could be exposed to and review Table 2-1. Consider other rigging methods if forces approach or exceed the stated breaking strength.

Avoid rigging loads to the QuickLash that that will rotate or twist the leg tubes.

Use the supplied cord to tether the Quicklash and long ball detent pin together to prevent dropping or loss of the pin.

### Care & Maintenance:

Check all components for bending and warping which could indicate overloading.

Before attaching rope or webbing directly to the QuickLash inspect carefully for sharp edges or burrs that may have developed. Lightly file or sand off burrs before use.

### Warning:

- Do not use the bail pins supplied with the TerrAdaptor to attach the QuickLash as these pins are not long enough to properly support the QuickLash securely
- Do not use the device if the quick release pin is bent or the ball does not fully extend beyond the outside of the hole in the QuickLash
- Improper rigging can cause twisting or rotating of the legs and should be avoided



**Table 2-1 - Strengths of auxiliary attachment points**

Auxiliary Attach Point	Breaking Strength
Lash Ring – Single Hole	4,500 lbf. (20kN)
Lash Ring – Opposing Holes	5,600 lbf. (25kN)
Talon Foot	6,744 lbf. (30kN)
Rocker Foot	6,744 lbf. (30kN)
Articulating Foot Adaptor	6,744 lbf. (30kN)
QuickLash – Straight Pull	6,744 lbf. (30kN)
QuickLash – Pulled to Side	3,372 lbf. (15kN)
Winch Brackets	6,744 lbf. (30kN))
Head Auxiliary Attachment Points	8,000 lbf. (36kN)

Manufactured By:  
Seattle Manufacturing Corp.  
6930 Salashan Parkway  
Ferndale, WA 98248  
USA  
Phone: 360.366.5534  
Fax: 360.366.5723  
[www.SMCGEAR.net](http://www.SMCGEAR.net)

Distributed By:  
Skedco, Inc  
10505 SW Manhasset Drive  
Tualatin, OR 97062  
USA  
Phone: 503.691.7909  
Fax: 503.691.7973  
[www.Skedco.com](http://www.Skedco.com)

Distributed By:  
Pigeon Mountain Industries  
4466 N US Hwy 27  
LaFayette, GA 30728  
USA  
Phone: 706.764.1437  
Fax: 706.764.1531  
[www.PMIRope.com](http://www.PMIRope.com)